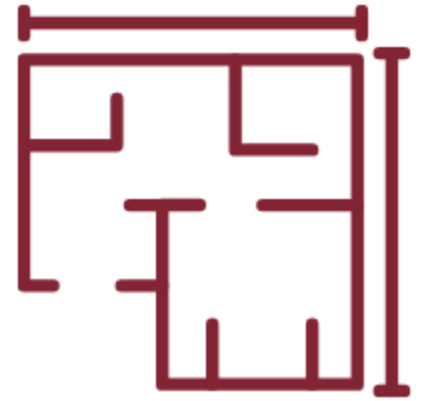


A Guide to

EFFECTIVE PLANT LAYOUT & EXPANSION STRATEGIES

WHAT IS A LEAN PLANT LAYOUT?

- Enhances value, cuts waste, boosts quality.
- Streamlines end-to-end flow.
- Minimizes delays, inventory build-up.
- Favors versatile, sized equipment.
- Uses kanban cards for communication.



HOW TO DESIGN A LEAN PLANT LAYOUT



This is an ongoing improvement process, not a one-time project.

- Map production steps, visualize processes.
- Identify wastage, analyze inefficiencies.
- Sketch layout, allocate resources.
- Implement plan, monitor performance.

LEAN PLANT LAYOUT EXAMPLES & EXPANSION STRATEGIES

Many companies apply lean principles effectively. Here are examples:

- Toyota pioneers one-piece flow, uses flexible equipment for customization.
- Virginia MetalFab grew to a a full production company partnering with GENEDGE.
- Jeff Shook enhances plant operations with Toyota Production System experience.
- - Chad Goff utilizes Digital Twin technology for efficient manufacturing layouts.



Partner with GENEDGE for comprehensive manufacturing improvement guidance and implementation.

GENEDGE
alliance

Get a free assessment
www.genedge.org